



July 1, 2022 - June 30, 2023



IN MEMORY OF DEBORAH MUELLER, MD



July 22, 1966 - February 10, 2023

In February 2023, we lost our enthusiastic and loving board member Deborah Mueller, MD, to metastatic lobular breast cancer. Deb was committed to the Lobular Breast Cancer Alliance's mission and vision, and her legacy of support continues. We dedicate this year's annual report to her memory.

A MESSAGE FROM OUR EXECUTIVE DIRECTOR



I am thrilled to share highlights of our most recent Fiscal Year that ended June 30, 2023 – a year in which the Lobular Breast Cancer Alliance (LBCA) made great strides in promoting awareness of lobular breast cancer and invasive lobular carcinoma (ILC) research, and in supporting patient advocacy.

We have not only significantly expanded our reach to more audiences, but we have also increased access to the lobular breast cancer educational materials we produce by translating key documents, including our ILC Fact Sheet and FAQs, into more than 15 languages. And in reaching more people, we are having an impact.

We are beginning to sense more people have heard of lobular breast cancer and more scientists are interested in studying it. There were more presentations of ILC research at the annual breast cancer symposium in San Antonio in December 2022 than ever before, nearly double the number from the prior year. We made two more ILC research grants including one focused on ILC imaging with a new partner, the Society of Nuclear Medicine and Molecular Imaging.

Our efforts to increase patient advocacy, as well as our collaborations with other key organizations focusing on breast cancer, are also making the need for more ILC research so much more visible. We have a growing number of volunteers reaching out to help support the work of our mission, and the American Cancer Society invited LBCA to be an inaugural member of their National Breast Cancer Round Table.

We continue to make the case for the need for publicizing specific information about ILC with government organizations such as the National Cancer Institute, which has committed to giving LBCA ILC-specific cancer incidence data reports annually and, ultimately, will integrate it into their public-facing breast cancer data pages.

We strive to ensure that comprehensive information about lobular breast cancer and, ideally, links to LBCA, are a part of every major breast cancer information website, so that we will put an end to the isolation that individuals with lobular breast cancer feel when they search for credible information on “our” breast cancer type, and will ensure that they find the valuable information provided by LBCA.

We also made great headway this year in disseminating ILC information to clinicians. We collaborated on developing an ILC curriculum for oncology nurse practitioners and physician assistants with the University of Texas Southwestern Medical Center that is now being tested. This will become another great resource we can offer. We are also working to raise awareness of the unique imaging challenges of ILC among breast imagers through a collaboration with the Society of Breast Imagers that will lead to a jointly published manuscript.

We are very grateful to the many volunteers who have joined us in raising our voices to spread the word and who so significantly augment what LBCA's small staff can accomplish. They inspire us every day to keep pushing for more research to ultimately identify lobular-specific treatments and protocols. We are also driven to push for clinical trials for drugs to treat metastatic lobular breast cancer, especially after becoming aware that there still have been none specifically focusing on metastatic ILC to date in the US. We feel the sorrow of this deficit as we mourn those among us who have succumbed to metastatic lobular breast disease, such as our dear board member [Deb Mueller](#), whom we lost in February. We forge ahead, urgently, with their spirits blazing in our hearts, to ensure that there will be more research to put an end to lobular breast cancer and to prevent it from plaguing those coming behind us.

We hope that you will take a moment to read more about all we have achieved this fiscal year and the new information and research that we have helped to share. On behalf of LBCA, I thank you for your continued support of this organization and for your belief in the work we are doing. We could not keep up this important work without your help.

With gratitude,

A handwritten signature in black ink that reads "Laurie Hutchinson". The signature is written in a cursive, flowing style.

A MESSAGE FROM OUR VOLUNTEER LEADERS

It was a tremendous privilege and honor to collaborate with such a dedicated and exceptional team of researchers and patient advocates over the past year as the Chair of the LBCA Scientific Advisory Board. This year, LBCA continued to promote educational material for patients facing lobular breast cancer. We have supported webinars dedicated to lobular breast cancer and a number of vital research grants. Notably, LBCA has successfully conducted a survey on the surgical experiences of patients diagnosed with invasive lobular breast cancer, receiving responses from over 1,400 patients worldwide. This year, the Scientific Advisory Board initiated dedicated working groups focused on big data analysis and AI research in the realm of lobular breast cancer. I look forward to continuing to work with LBCA as a member of the Scientific Advisory Board with the mission of enhancing the care and outcomes of individuals affected by invasive lobular breast cancer.



Dr. Rinath Jeselsohn, Chair (FY2023)
LBCA Scientific Advisory Board

As chair of the Patient Advocate Advisory Board (PAAB), myself and fellow members have the much needed opportunity to surface and express what matters most to invasive lobular breast cancer patients. We are also privy to the most current information from both the medical and scientific community, which is of great benefit in prioritizing our goals. We strive to make our meetings always “actionable” with a focus on increasing awareness and lobbying for advancements in the treatment protocol of this distinctly different breast cancer. Progress is certainly being made, but we have so much further to go. We remain committed and determined to keep pushing forward, so that people with lobular breast cancer can feel confident that their type of breast cancer is being addressed and treated accordingly. Invasive lobular breast cancer is not rare, accounting for 15% of all breast cancer diagnosed. There are a lot of us - lobular deserves a lot of attention. As proud chair of the PAAB, I continue to be committed to helping ensure that the lobular patient voice is a part of the planning to make this happen.



Irene Jamieson, Chair
LBCA Patient Advocate Advisory Board

OUR VOLUNTEER AND EXECUTIVE LEADERSHIP FY 2023



Board of Directors



Tracy Cushing, MD



Laurie Hutcheson



Kathryn Krantz, MD



Tanya Martin-Dick



Judy McDevitt



Deborah Mueller, MD



Ramlah Nehring, PhD



Robert Oakes

LBCA Mission

As the only organization in the US dedicated to invasive lobular breast cancer (ILC), LBCA's mission is:

To make all who are touched by ILC aware of its unique characteristics and the critical need for more ILC research; to be the go-to source for information on ILC studies, clinical trials, and educational tools; to foster partnerships among patients, scientists, clinicians, and breast cancer organizations to increase dialogue about ILC and research advocacy; and to fund vital ILC research.

LBCA Vision

A world in which lobular breast cancer is found early, treated effectively, and eradicated permanently.

LBCA Staff

Laurie Hutcheson, Executive Director
Mason Mitchell-Daniels, COO/Volunteer Coordinator
Colleen Fitzwater, Communications Director
Karen Ferguson, Development Director

Patient Advocate Advisory Board

Irene A. Jamieson, Chair
Janice Axelrod, Vice Chair
Ann Gottbrath Camden, Vice Chair
Kristine Blake
Shay Chawla
Karan Garrison
Gitte H. Joergensen
Julia Katherine Levine
Nancy MacGillivray
Diane Mapes
Judy McDevitt
Christine McKay
Flora Migyanka
Barbara Neilsen
Dawn Wiklinski

Scientific Advisory Board

Rinath Jeselsohn, MD, Chair
Patrick W.B. Derksen, PhD
Rachel C. Jankowitz, MD
Maxine Jochelson, MD
Megan Kruse, MD
Otto Metzger, MD
Jason A. Mouabbi, MD
Rita Mukhtar, MD
Shani Paluch-Shimon, MD
Jorge S. Reis-Filho, MD, PhD
Rebecca B. Riggins, PhD
George Sflomos, PhD
Matthew J. Sikora, PhD
Peter Simpson, PhD
Christos Sotiriou, MD, PhD
Gary A. Ulaner, MD, PhD



LBCA CHAMPIONS ILC RESEARCH

When we are able, LBCA seeks to directly advance research to identify better methods of detection or specific treatments for lobular breast cancer. Since 2020 we have been able to fund four ILC research grants to early investigators or fellows. This past fiscal LBCA actively funded two and solicited a fifth.

In FY 23, LBCA ILC research grantee Dr. Karen Van Baelen of Leuven, Belgium, completed the first of two years of her ILC research grant to study ILC progression and treatment resistance mechanisms using a unique post mortem tissue donation program.

Through the program, which allows people with ILC in or near Leuven to donate tissue samples after their deaths, Van Baelen is studying lobular lesions and attempting to reconstruct how lobular breast cancer spreads throughout the body. She hopes, and we believe, that this will lead to a better understanding of how ILC spreads, grows, and resists different therapies. This in turn can lead to better treatments that prevent metastatic ILC.

In March 2023, LBCA awarded Dr. Marina Sharifi, an oncologist at the University of Wisconsin, the inaugural Invasive Lobular Carcinoma Imaging Research Grant sponsored jointly by LBCA and the Society of Nuclear Medicine and Molecular Imaging (SNMMI). The \$100,000, one year grant marked the first collaboration between the two organizations and is funding research focused on advancing ILC imaging to improve patient outcomes.

This collaboration also marks the first time that patient advocates have been voting members in the SNMMI grant application review process. Dr. Sharifi aims to study and compare how tumor estrogen signaling changes on treatment via imaging and how tumor estrogen signaling changes on treatment via the blood.

She hopes to better understand whether the combination of the imaging and blood test can ultimately be used to distinguish between patients whose cancers will respond to anti-estrogen therapy and patients whose cancers are resistant to this type of treatment.

She noted that “this pilot study will lay the groundwork for a larger phase I/II clinical trial testing this approach to identify patients with anti-estrogen resistance early and offer them an alternative, more effective treatment, minimizing exposure to side effects from a treatment that is not effective.”

“LBCA is so pleased to have been able, with the help of many wonderful donors, to support the important work of these researchers. We hope to be able to support ILC researchers annually,” commented LBCA Executive Director Laurie Hutcheson. “The more that we are able to promote or fund ILC research, the more we know we will have a positive impact on the future understanding and treatment of ILC.”

HONORING MOTHERS WITH LOBULAR BREAST CANCER

The horror of hearing you have lobular breast cancer and then learning how little is known about it is an anguish and frustration that reverberates through whole families. We all learn too quickly that while there is still no specific treatment for lobular breast cancer, there is much that can be done and needs to be done to raise awareness and push for more research to change this. The community of individuals with lobular breast cancer is rich with family members and friends who want, and pitch in, to help. In spring 2023, we recruited some of them to tell their stories as another way to get the word out about lobular breast cancer.

On Mother's Day 2023, LBCA released five videos in which the children of women with lobular breast cancer shared their personal messages in special tribute to their mothers. They explained how lobular breast cancer affected their moms and their families and why ILC needs more research. One of those children was LBCA Board of Directors member Tanya Martin-Dick.

Tanya's story had a unique wrinkle. Her mother's ILC diagnosis came one year after her own. Tanya's mother, Eva, helped Tanya manage her ILC diagnosis and was by her side "every step of the way through her treatment."

In her video, Tanya expressed gratitude for Eva and also for LBCA and its resources that were essential when her mom was diagnosed. They allowed Tanya to help her mother navigate her own treatment path. Tanya remarked, "I was ever so grateful that I had found the Lobular Breast Cancer Alliance along the way."

Each family member's tribute video is passionate and genuine and, we hope, some comfort to others. LBCA invites more friends and family to make and share their tributes and is here to help. Since May, LBCA has created an instructional document for creating these types of videos and encourages others to share their own stories and honor those in their lives with ILC.

All video tributes will be permanently housed on our [ILC Story webpage](#).





PATIENT SURVEYS SHED LIGHT ON LIVING WITH ILC

In support of LBCA's goal to raise awareness and educate about ILC, LBCA staff and advocates have now conducted three anonymous patient experience surveys about specific aspects of living with ILC. The survey results have been submitted as abstracts for presentation as posters at the San Antonio Breast Cancer Symposium (SABCS), the largest annual breast cancer-focused conference in the US.

SABCS attendees include a diverse and focused audience within the breast cancer field. It is an excellent forum through which LBCA can raise awareness among researchers and clinicians of the challenges people living with lobular breast cancer face and, we hope, pique interest in conducting more ILC research that will lead to ILC specific imaging and treatment guidelines. In December 2022, we presented the results of our survey of patients' experience with metastatic ILC at SABCS.

Each year, conceptualizing the topic of focus, drafting the survey, and developing the abstract and poster is truly a team effort. LBCA's Research and Advocacy Committee members serve as a hub for this activity, engaging with input from ILC scientists and clinicians from our Scientific Advisory Board as well as other interested researchers.

This year's survey focused on ILC patients' experience with surgery and surgical decision making. Results highlighted ongoing concerns about potential extent of disease and risk of recurrence as factors in surgical decision making and concerns about accuracy of currently available imaging modalities.

The survey team was moved by the overwhelming number of survey responses and the open ended comments shared. The open-ended survey responses lent themselves to the development of an additional abstract draft submitted and accepted for presentation at the 2023 International ILC Symposium.

We are forever grateful for those who help us raise awareness and educate about ILC by sharing their experiences in these anonymous surveys.

CANCER RESEARCH

[ABOUT](#) [ARTICLES](#) [FOR AUTHORS](#) [ALERTS](#) [NEWS](#)

POSTER SESSION ABSTRACTS | MARCH 01 2023

Abstract P6-05-50: Lobular Breast Cancer Alliance Inc. Survey of Individuals with Metastatic Invasive Lobular Carcinoma FREE

Laurie B. Hutcheson; Janice Axelrod; Ann Camden; Donna J. Charlevoix; Tracy A. Cushing; Maxine S. Jochelson; Megan L. Kruse; Theresa Langdon; Julia K. Levine; Christine McKay; Otto Metzger; Mason Mitchell-Daniels; Jason Mouabbi; Barbara F. Neilsen

LBCA MAJOR ACCOMPLISHMENTS BY GOAL AREA

Fiscal Year 2023 (July 1, 2022 - June 30, 2023)

LBCA Goal: Raise Awareness and Educate about ILC



- Presented a poster at the 2022 San Antonio Breast Cancer Symposium (SABCS) sharing the findings from our survey last spring of individuals living with metastatic ILC. Our abstract describing our findings was published in the spring in a special SABCS research issue of the American Association for Cancer Research (AACR).
- Published and disseminated lay summaries of the ILC-focused research posters at SABCS22.
- Produced and posted ILC awareness raising videos created by women to honor their mothers with ILC.
- Developed in collaboration with the Society of Breast Imagers (SBI), a survey of radiologists regarding their uses and concerns about imaging technology and patients with lobular breast cancer. It also provided information about ILC and the resources and information available through LBCA. Over 300 SBI members completed the survey. LBCA is co-authoring a manuscript with the results for publication in the SBI Journal.
- Collaborated with Ali Dixon, an ILC survivor and wife of National Hot Rod Association (NHRA) driver Larry Dixon, to raise awareness about ILC and LBCA at the NHRA US Nationals.
- Published the new document Questions for My Doctor to LBCA website and social media and made available for download.
- Translated LBCA's ILC Fact Sheet into 15 languages other than English and FAQs into 16 other languages. These were posted on LBCA's website and disseminated across social media and to sister organizations.
- Joined Conquer Cancer Council.
- Increased newsletter subscribers by 15.2%. Increased newsletter open rates by 9.21% (59.14% vs. 54.15% last year).
- Nearly 43,000 people visited the website. This is a 16.2% increase from FY22.

LBCA Goal: Be the Go-to Source for ILC Research/Clinical Trials and ILC Treatment Information



- Created a page on our website highlighting the ILC-focused research of our Scientific Advisory Board (SAB) members.
- Recorded and shared an interview on our website with SAB Chair and Dana Farber Oncologist Dr. Rinath Jeselsohn about her ILC research titled *A Distinct Chromatin State Drives Therapeutic Resistance in Invasive Lobular Breast Cancer*.
- Produced and disseminated recorded interview with SAB members Gary Ulaner and Jason Mouabbi regarding the Appropriate Use Criteria for FES/PET that they worked on for publication by SNMMI.

LBCA Goal: Cultivate Alliances Among US & International Breast Cancer Advocacy Organizations

- With the help of ILC patient advocates, researchers, and collaborators, we spread the word about ILC to a wider audience throughout Breast Cancer Awareness Month in October 2022. Our important message to raise awareness that breast cancer has types was conveyed in a flyer that we created through the collaborative efforts of several of our SAB members and other ILC researchers and many patient advocates representing both LBCA and 20 sister breast cancer advocacy and cancer research organizations.
- Joined Tigerlilly Race Alliance and American Cancer Society National Breast Cancer Round Table.
- Took part in a lobular breast cancer-specific episode of *The Doctor Is In*.
- Worked with the American Cancer Society and National Comprehensive Cancer Network to get info about ILC and LBCA including links to our website on their webpages.



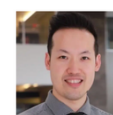
LBCA Goal: Promote and Fund ILC Research

- We funded and awarded a second lobular breast cancer research fellowship with our partner AACR and a new imaging research grant in partnership with the Society of Nuclear Medicine and Molecular Imaging (SNMMI).
- Presented the webinar Highlights of the 2022 Joint International ELBCC/Lobsterpot & LBCA Invasive Lobular Carcinoma (ILC) Symposium in partnership with the European Lobular Breast Cancer Consortium (ELBCC)/Lobsterpot.
- Promoted webinar featuring SAB member Matt Sikora PhD, LBCA Board Chair Tracy Cushing, MD, LBCA Founding Advocate Lori Petitti, and LBCA volunteer Donna Charlevoix who spoke about research and advocacy on the front range and provided an ILC research update.
- Promoted Komen Metastatic Breast Cancer Impact Series webinar about lobular metastatic breast cancer that included SAB member Rachel Jankowitz, MD.
- Promoted and posted on LBCA website Dr. Megan Kruse's podcast about the differences between lobular and ductal carcinoma and the challenges of ILC.
- Dr. Shani Shimon, MD, and George Sflomos, PhD, joined the SAB.

LBCA Goal: Support ILC Patient Advocacy

- Supported ILC patient advocate attendance at important breast cancer conferences through the provision of six patient advocate travel scholarships.
- Held Advocate Chats. Topics included:
 - ▶ A Conversation with LBCA Scientific Advisory Board member Matthew Sikora, PhD, Discussing Basic Research and Supporting the Lab.
 - ▶ A Conversation with LBCA Scientific Advisory Board member Dr. Megan Kruse About SABCS 2021 Research and Presentation on Pleomorphic vs. Non-pleomorphic ILC.
 - ▶ A Conversation with Dr. Nadia Howlader from the National Cancer Institute (NCI) Surveillance Research Program.
 - ▶ Conducting a Peer-to-Peer Fundraiser.
 - ▶ A conversation with Dr. Jason Mouabbi.
 - ▶ A conversation about basic science of breast cancer with LBCA Board member Dr. Ramlah Nehring and Dr. Sasha Stanton of Providence Cancer Institute.
 - ▶ A conversation with Dr. David Lim and ILC patient advocate Christine McKay.

Results from a Population-Based Observational Cohort Study on ILC in Ontario, Canada



David W. Lim, MDCM, MEd, PhD, FRSC
2021 Conquer Cancer - LBCA Young Investigator Awardee for ILC Research



Christine McKay
LBCA Patient Advocate Advisory Board Member



lobularbreastcancer.org

FISCAL YEAR 2023 FINANCES

As Fiscal Year 2023 neared its close, LBCA accomplished an amazing next step in its growth as an independent 501(c)(3) organization. We surpassed our fundraising goal and exceeded \$500,000 in revenue for the fiscal year. More revenue meant increased capacity for LBCA to focus on the vision and mission of the organization and make greater strides in supporting ILC education and awareness raising activities.

These included creation of more high quality recorded webinars and downloadable patient resources that were translated into at least 15 common languages spoken in the US other than English. LBCA also expanded its capacity to fund research and added a new invasive lobular carcinoma (ILC) grant making partner - the Society of Nuclear Medicine and Molecular Imaging (SNMMI). LBCA and SNMMI each provided \$50,000 to jointly issue a \$100,000 ILC imaging research grant solicitation. LBCA also continued to fund the young investigator grant funding program with the Conquer Cancer Foundation of the American Society of Clinical Oncology (ASCO).

LBCA's capacity to support patient research advocacy also increased funding for more travel grants to support individuals to attend conferences and the establishment of a new capacity to support ILC advocates to participate in the highly regarded training on breast cancer science and advocacy conducted by LBCA's partner, the National Breast Cancer Consortium (NBCC) Project LEAD program.

We were able to do all this thanks to strong leadership and committed staff, careful financial stewardship, and generous support from our donors. By judiciously using and managing our funds, we ended the year in a strong position ready for the months ahead.

Exceeding the \$500,000 revenue threshold this fiscal year also meant LBCA reached the next level of fiscal review - a financial audit - that nonprofit organizations need to have to demonstrate their fiscal health and effective responsibility to the public. LBCA engaged the independent CPA firm Citrin Cooperman & Company, LLP to complete the audit. In their audit report, Citrin Cooperman & Company concluded that LBCA's financial statements were presented fairly and in accordance with accounting principles generally accepted in the United States of America.



FISCAL YEAR 2023 FINANCES

REVENUE	FISCAL YEAR 2023
Contributions	\$517,806
Sponsorships	\$64,371
In-kind contributions	\$19,548
Interest Income	\$265
Total Revenue	\$609,990

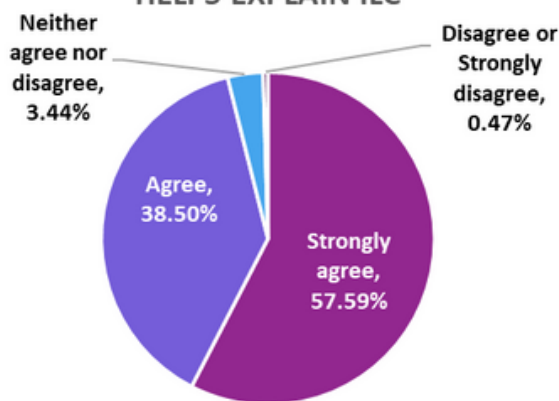
EXPENSES	FISCAL YEAR 2023
Payroll & Related Expenses	\$266,140
ILC Research Grants Funded	\$112,861
Professional Fees	\$107,277
Office and Other	\$26,284
Scholarships and Sponsorships	\$6,640
Travel to Conferences	\$5,587
Insurance	\$2,952
Advertising	\$885
Total Expenses	\$528,626

Net Assets End of Year	2022	2023
	\$224,913	\$298,277

"I have really appreciated the bridge between researchers and patients that LBCA provides."

"Thank you for advocating for more research and funding for this sneaky and understudied subtype of breast cancer!"

THE INFORMATION ON THE WEBSITE HELPS EXPLAIN ILC



"With your publications library, I feel confident I'm not missing new research findings."

"The LBCA is such an amazing resource - I'm so glad I have it to turn to along with the newsletter to help keep me up to date."

"Thanks to all of you who have provided me with this wonderful resource. I don't feel alone. I feel hope!"

LBCA SURVEY HIGHLIGHTS

The Lobular Breast Cancer Alliance (LBCA) issued its annual performance survey on how the organization has done relative to each of our five key goal areas and activities in support of our mission and vision.

We are thankful for the huge response (642) from our engaged community for sharing their feedback with us (compared to 191 last year). Of note: just about 100% had or have lobular breast cancer; of those who shared their location, over 75% were from North America; and more than 80% of survey respondents were over age 50.

Survey results conveyed overall that LBCA continues to provide easy to understand and useful information on the website and is a "go to" source for ILC research findings and information (87.1% of respondents). We were glad to note nearly 100% perceive the LBCA website conveys the urgent need for more ILC research.

We received helpful feedback from respondents who had viewed LBCA Advocate Chats. These are the webinars we produce to support learning about ILC science and advocacy. The respondents indicated that their top five favorites in the series, which remain on the website to view, are: *Reading Research Articles and Posters*, *Discussion of ILC Research Posters at SABCS22*, *Intro to Cancer Basic Science and Immunology*, *Results from an ILC Study in Ontario, Canada* - our first ILC grantee, and *Introduction to Lobular Advocacy*, our [first Advocate Chat featuring LBCA Founder Leigh Pate](#).

We also received feedback that only about half of respondents were aware of the webpage dedicated to [LBCA Scientific Advisory Board members' recently published research](#). We will try to promote this more in the future. Last, we received many useful suggestions for topics and activities LBCA might present to further support respondents' advocacy efforts.

We were happy to once again receive many comments from survey respondents conveying gratitude for LBCA's existence, for the current ILC research that we share, and the ILC advocacy and research we promote. We have shared several on this page.

2023 LEGACY GIFT DONORS

We are grateful to our legacy donors whose great commitment to supporting LBCA led them to plan their gift as part of their estate plan and/or their family to set up a gift in their memory.

Leigh Pate Memorial Advocacy Fund

2023 CIRCLE OF COMPASSION DONORS

The Circle of Compassion is a treasured group of dedicated donors who have committed to making a gift on a recurring basis.

Janice Carter
Dianne Didio
Daneen Huddart
Joe Hutcheson
Laurie Hutcheson

Barbara Jacobsen
Mason Mitchell-Daniels
Tamiko Miyano
Dawn Mooney
Robert Oakes

Pranav Popat
Jennifer Rogers-Petitt
Donna Russell
Desaree Welch
Mary Jo Wright



FISCAL YEAR 2023 DONORS

Everything we are able to accomplish is due to the generosity of our donors. We are grateful to each of them for their support.

Anonymous	Tammey Bertrand	Carolyn Chiechi
Betts Abel	Dr. Bhotiwihok	Sherri Christianson
Linda Adamovich	Fei Bian	Tina Cincotti
Elaine Adams	Gerald and Sarah Bieze	Beth and Joseph Clark
Samiya Ahmad	Bill and Meinda Gates	Elizabeth Clark
Mohammed Al Fayyadh	Foundation	Sue Clark
Melody Allen	Debra Blumberg	Donna Clarke
AmazonSmile Foundation	Lauren Boglivi	Sara Cleland
Barbara Amblard	Maryanne Bombaugh	Tracy Clemenson
American Endowment	Terri Bradley	William Clouse
Foundation	Candie Brady	Allison Cocuzzo
Michael Anderson	Kathleen Brennan	Rose and Barry Cofer
Molly Angstman	Sally Brennan	Susan Cohen
Jessica Apolloni	Nancy Brereton	Gayle Cole
Apple	Robert Bres	Mary Ann Collignon
Beth and Carl Apter	Erika Brewer	Christine Colosi
Malia Arnold	Kerri Brown	Community Foundation
Jane Arrington	Carol Buckley	Boulder County
Susan Athene	Ann and David Burgess	(Alexandra Fund)
Janice Axelrod	Beverly Burgess	Keith and Marcia Conant
Elizabeth Babbini	Molly Burgess	Patrick Conroy
Kathleen Bagge	Kathleen M. Cahill	Gregory Cook
Maria Baker	Kristin Callis	Nathalie Cross
Patricia Baker	Ann Camden	CT Mediation Center
Bank of America Charitable	Shawn Campbell	Mary Cullen
Foundation	Joseph Cante	Susan and Paul Curtin
Jonathan Barnhart	Lynn Caragol	Dr. Tracy Cushing
Katherine Barsness	Sandra Carruthers	Judith Daniels
Colleen Barthol	Janice Carter	Kim Danielson
Julianne Bartlett	Maureen Carter	Bryan DeLottinville
Cathleen Bassett	Margaret Cass	Barb Demarco
Johanna Bayer	Luis Castagnini	Julie Demaree
George Bebis	Sylvia Castillo	Timothy DePietro and
Donna Behrens	Phillip and Krista Cerasoli	Colleen Fitzwater
Samara Bel	Paula Chapman	Kim Dienhoff
Anne Bell	Fidelity Charitable	Allison Dixon
Dr. Benedikt	Charities Aid Foundation of	Martin Doll
Karen Berkley	America	Thomas Dowling

Lisa Duba
Wilma Duke
Amy Durr
Janet Edwards
Amal Ekbal
Kristen Elsby
Thomas Erickson
Richard and Patricia Evans
Facebook/Meta
Marcia Falconer
Kristen Weck Farrag
Jody Feinberg
Mrs. Ferguson
Colleen Fitzpatrick
Gayle Flowers
Michael Flynn
Benedicta Foley
Clare Foley
Marie Foley
Ewa Folta-Stogniew
Kelly Franzen
Beatrice Fritz
Marsha Gai
Kathy Gajewski
Shelley Galbraith
Elizabeth and Al Gallegos
Ann Gambro
John Gambro
JRondi and Larry Gangnes
Lyn Garrett
Karan Garrison
Sharon Garsen
Sherry Gaskill
Patricia Gaucher
Susan Gershenhorn
Pamela Getz
Angela Gilbert
Teresa Gillem
David and Cheryl Girvan
Give Lively Foundation Inc.
Eileen Glover
Jim Gomes
Alice Gong
Google
Daniel Gottovi

Kim Graham
Debra Graves
Denise Gregg
Sarah Guiles
Kimberly Gwilt
Zsuzsanna Gyorky
Jane Haase
Jeremy Hall
Sue and Scott Hall
Don Hamner
Catherine Handzel
Kathleen Hankard
Sepi Hashimi
Jendi Haug
Luann Hay
Mary Hendricks
Linda Hendrickx
Katherine Hensley
Connie Hersbach
Todd Hesketh
Barbara Hevener
Horejsi Charitable
Foundation
Meaghan Houska
Andrew and Jami Huber
Anna Huddart
Daneen Huddart
Edward Hutcheson
Joe and Laurie Hutcheson
Polly Hutcheson
Barbara Jacobsen
Patricia Jakel
Irene Jamieson
Patricia Janes
Rupert Jilcott
Joy Jin
Audrey Johnson
Frances Johnson
Nancy Johnson
Thais Johnson
Josephine Jordan
Veronica Jordan
Judy and Peter Blum
Kovler Foundation

Carol Juergemeier
Patricia Kaminski
Rosemary Kanusky
Kelly Kellington
Jason Kempenich
Jeffrey Kerby
Mr. Warren and Dr. Laura
Kerper
Megan Kerr
Sharon King
Carol Kinnaird
Patty Kirkley
Jianmei Kochling
Erik Koeppen
Debbie Kosior
Tamari Kovach
Halina Kozik
Barbara Kramer
Kathryn Krantz
Arnis Krussow
Kenneth Lajoie
Pearl Lajoie
Gerry Lammano
Julia Levine
Enid Light
Ann Livengood
Joann Liverant
Barbara Locke
Heidi Lockhart
Harry Lohr
Michele Long
Julia Longenecker
Eleanor Loos
Joyce Losen
Laura Loy
Mark Lund
Susan MacDonald
Katherine Mader
Peg Mahoney
Arlene Marcionette
Eva Martin
Tanya Martin-Dick
Karen and Christopher
Masciale
Allison Massenzio

Donna Mastran
Daniel Matthews
Gelene Matthews
Mayfield Junior School of
the Holy Child Jesus
Dr. McCauley
Sekinat McCormick
Kathleen McCracken
Colleen McDevitt
Judith and Robert McDevitt
Barbara McGovern
Robin McIntosh
Kerry McKeon
Charlotte McLaughlin
Mary McLaughlin
Tammy McLean
Marsha Medalie
Margaret Metcalf
Christina Metzler
Lee Ann Michelson
Microsoft
Barbara Miller
Susan Miller
Marie Mire
Mason Mitchell-Daniels
Tamiko Miyano
Carolyn Mobley
Dawn Mooney
Robert Mooney
Tracey Moorhead
Harald Mootz
Morgan Stanley Gift Fund
Stephanie and John
Mounts
Deborah Mueller
Donald and Wanda Mueller
Vamsidhar Mukkamala
Sara Muller
Ginger Murphy
Irene Murray
Cynthia Mynatt
National Philanthropic
Trust
Ramlah Nehring
Fern Nemenyi

Nannette Nero
Karen Newman
Barbara Nill
Timothy and Joni Noel
Carol Nolan
Michelle Noland
Ruth Nolen
Jane O'Donnell
Ms. P. Olson
Michelle Ordway
Diane O'Regan
Ana Otero
Zoe Oxley
Paramount
Mary Byrne Park
Heidi Patterson
Katie Patterson
Suzanne Patterson
Reba Carol Pattillo
Amy Paul
William Perry
Lori Pettiti
Ann Pfeiffer
Pfizer Inc.
Mary Catharine Philbeck
Maria Pierce
Gene Pien and Leslie Pifer-
Pien
Pilzer Foundation, Inc.
Laura Piscatelli
Elizabeth Pitts-madonna
Erna and Bob Place
Pledgeling Foundation
Denise Pointer
Patricia Pollack
Karen Putnam
Karen Quast
Peggy Quinn
Isabel Ramberg
Deborah Rasch
Alexandra Rau
James Read
Susan Reboul
Penelope Regar
Annie Reid

Brenda Renzulli
Teri Rice
Carrie Richards
Christine Richardson
Jane Rilee
Kathryn Robertson
Jennifer Robinson
Roche Molecular Systems
Larry Rodick
Tammy Rogers
Jennifer Rogers-Petitt
Mary Roland
Kimberly Roney
Lisa Rossano
Race Roster
Sandra Rudolph
Donna Russell
Kelly Rutkowski
Evelyn Ryan
Elizabeth Ryen
RM Rymsza
Robin Salter
Sampson Family Foundation
Stephanie Savage
Dan Saylor
Richard Schlackman
Jane Schneider
Schwab Charitable
Clara Silverstein Schnee
Geneva (Jean) Seagraves
Seattle Foundation
Bridget Seigny
Colleen Sexton
Larissa Shaffer
Amita Shah
Stacie Shapiro
Grace Shin-Kwok
Susan Shirley
Nancy Shivers
Sisters Oils Service LLC
Andrea Slater
Lisa Sleboda
Patricia Small
Ann Smith
Dru Smith

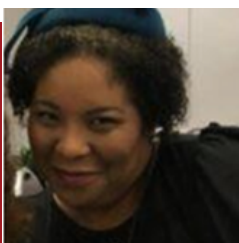
Laura Smous
Eric and Lynn Sobel
Cathy and Dennis Spar
Deborah Stambaugh
Helen Daniel Stiles
Rachel Stramel
Hillary Strome
Eileen Strong
Linda Sully
Tracy Sumner
Valerie Swaner
T. Rowe Price Program for
Charitable Giving
Andrea Taylor
Rowena Teague
Stefanie Teeling
Linda Teixeira
Molly Thibedeau
Ana Tigera
William Toffey
Carol Tollefsrud
Susanne Topp
Toyota
Patty Trachtenberg
J. Paul Trawick
Michele Tremblay
Cyndi Troutman
Naz Tursun

United Way of Greater
Atlanta
US Charitable Gift Trust
Rita Van Blommestein
Van Bortel of Rochester
Lori Van De Wetering
Tara Van Rooy
Kay Vandenberg
Patricia Vanderwall
Vanguard Charitable
Camille Vasquez
Brenda Vega
Vikaharia Charitable Fund
Dr. H. R. and Sandra Vinik
Susan Goodman and
Daniel Wadler
Kathleen Wagner
Jenny Walker
Dianna Walta
Deborah Walter, MPA
Lisa Warden
Daniel Waxler
Bette Weaver
Jennifer Webster
Bonnie Weck
Logan Weck
Susan Wegner
Beth Weibling

Lynne and Peter Weil
Donna Weist
Wella Financial Advisory
Desaree Welch
Susan Wertman
Terri Wesselman
Annette West
Cynthia Wilcox
Barbara Lynne Wilkie
Gene Wilkins
Kile Williams
Katherine Willis
Kelly Willner
John Wills
Angela Wilson
Sheila Winget Murray
Marilyn Wippl
Terry Wood
Heather Woollen
Mary Jo Wright
Sara Yazdian
Jeffrey Yonover
Connie Davis Young
Connie Young
Lucinda Young
Renaee Younie
Deborah Zanish
Rhyan Zweifler

While every effort has been taken to ensure this list's accuracy, we know mistakes may happen. We apologize for any omissions.

Two Recipients of LBCA Travel Grants to Attend the 2022 San Antonio Breast Cancer Symposium (SABCS22) Speak About SABCS22 and LBCA.

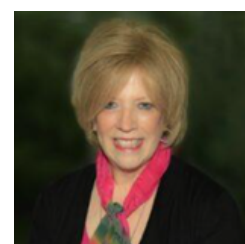


"I keep utilizing LBCA's website as a guide and reference for updates on new research as they continue to raise a fuss about ILC."

Megan-Claire Chase

"SABCS22 was chock full of some amazing presentations and follow-up research data that will most surely translate into the clinic and impact many patients."

Valerie Fraser



THANKS TO YOU



"I am tremendously excited and honored to assume the role of Chair. I look forward to collaborating with our dedicated team, advancing our mission to raise awareness, advocate for research, and leave no stone unturned in our quest to make lobular history. Together, we will continue to amplify the voices of patients, clinicians, and researchers. I eagerly anticipate the progress and achievements that lie ahead in our collective fight against lobular breast cancer."

Dr. Jason Mouabbi, Incoming Scientific Advisory Board Chair



"Receiving a lobular breast cancer diagnosis is such a shock. Finding the Lobular Breast Cancer Alliance has been such a huge relief and so informative for so many. I am passionate about supporting LBCA and its great work spreading the word about lobular breast cancer and accelerating the search for a treatment!"

Judy Kovler, Loyal Supporter



"Supporting LBCA and its mission is paramount to us at GE HealthCare, as it aligns with our core values of patient empowerment, collaboration, and innovation in personalized diagnostic imaging around detecting ILC. We help LBCA to drive meaningful advancements in the understanding of ILC, because together, we believe we can make a difference in the lives of those affected by this disease."

Deborah Walter, GE HealthCare



"I felt lost when I found out I had lobular carcinoma. I'd never heard of it before. But the LBCA website helped me quickly get up to date on my disease. It was comprehensive, easy to navigate, and it gave me tremendous solace. I was able to access the resources and experts available to me as well as the questions that I needed to ask, all right away because of this one source. I found the LBCA staff to be incredibly responsive to my desire to join in their work ... and now I am helping them launch local advocacy teams. What a wonderful new twist to my ILC story!"

Kathleen Moss, LBCA Volunteer



"I am so very grateful for finding the Lobular Breast Cancer Alliance. I remember hearing my diagnosis and immediately found this wonderful resource. LBCA is a place I go to to see the newest research, and I follow the doctors that are making a difference."

Daneen Huddart, Loyal Supporter and Patient Advocate

WE'RE MAKING A DIFFERENCE

"Shocked and confused when an MRI unexpectedly disclosed ILC that my mammogram had failed to detect, I turned to LBCA's resources for information and answers. After learning how many critical knowledge gaps exist regarding its diagnosis and treatment, I was inspired to join LBCA's Board of Directors and support its advocacy and research initiatives."

Kathy Krantz, LBCA Board Member



"As an LBCA/SNMMI ILC research grantee, I am honored and excited to have the opportunity to implement a pilot study that could lay the groundwork for a larger phase I/II clinical trial testing a new approach to identifying patients with anti-estrogen resistance early and offering them an alternative. I'm so grateful LBCA exists and is so instrumental in making sure more ILC research is conducted."

Dr. Marina Sharifi, 2023 LBCA/SNMMI ILC Imaging research grant recipient



"Courage. Strength. Positive attitude. For months I tried to live by those principles as I endured testing before my metastatic lobular breast cancer was diagnosed. So little information came to me from my care team about this challenging cancer. Then, I found LBCA ... a lifeline to information and community. Through this knowledge, I discovered my purpose and regained a sense of control."

Nikoo McGoldrick, Novelist, Patient Advocate



"There is nothing more sacred than the bond between a mother and child. My mother and late grandmother have each bravely faced lobular breast cancer. I have never felt a deeper sense of purpose than to help LBCA in this fight."

Pranav Popat, LBCA Circle of Compassion Donor



"I had retired early, and had the rest of my life ahead to enjoy. Then I was diagnosed with invasive lobular carcinoma - not the prevalent type of breast cancer, and very understudied. Knowing my doctors knew so little about ILC, I worried, could I live 5, 10 or 15 years? ILC needs more attention, and more research. This is vital for us to live long and healthy lives, so I donate to LBCA."

Barbara Lynne Wilkie, Loyal Donor and Advocate





The Lobular Breast Cancer Alliance Inc. is the go-to source for invasive lobular carcinoma (ILC) information and advocacy, and the only organization in the U.S. dedicated to raising awareness about ILC in a quest to eradicate lobular breast disease.

Our next step on the path to fulfilling our mission is to build our capacity to share more ILC information, publicize current and cutting edge research and clinical trials, grow and nourish a network of patient advocates, and fund more ILC research grants.

We continue to need your help:

- to ensure sorely needed research on methods of detecting ILC and preventing its recurrence, and identifying best treatment approaches for ILC - distinct from that of ductal;
- to support our growing community of people collaborating to educate clinicians and help one another raise awareness about this understudied disease; and
- to keep LBCA moving forward to stop this deadly breast cancer subtype that afflicts tens of thousands of women each year

Please support LBCA with a contribution now to help us succeed!

Lobular Breast Cancer Alliance Inc.

www.lobularbreastcancer.org

P.O. Box 200, White Horse Beach, MA 02381

info@lobularbreastcancer.org

Lobular Breast Cancer Alliance Inc. is a public charity under section 501(3)(c) of the U.S. Internal Revenue Code, EIN 86-2260246. Donations are tax-deductible to the fullest extent permitted by law. For legal notices, please see <https://lobularbreastcancer.org/state-fundraising-notice/>.