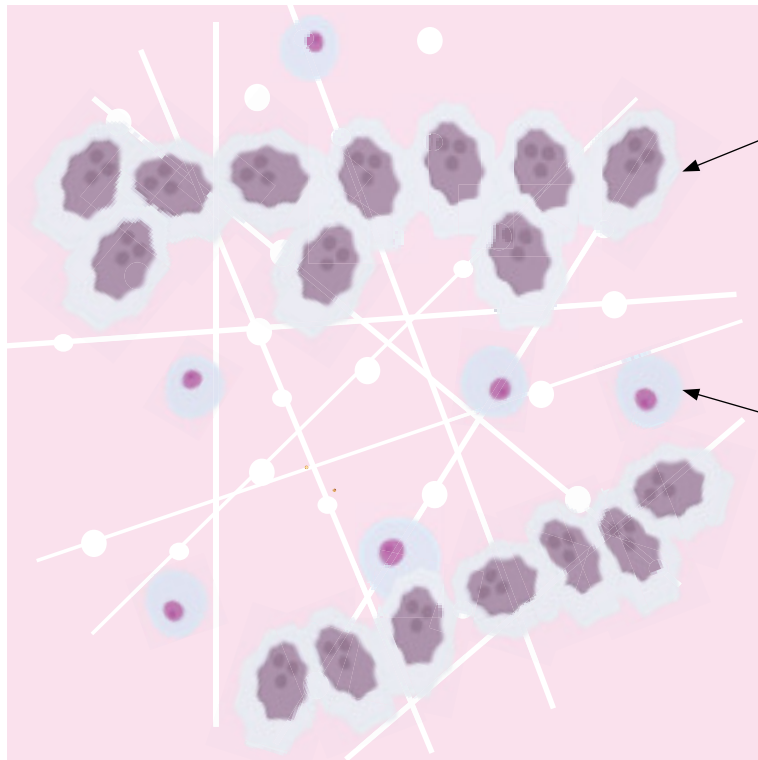


Invasive Lobular Carcinoma (ILC) Tumor Cells

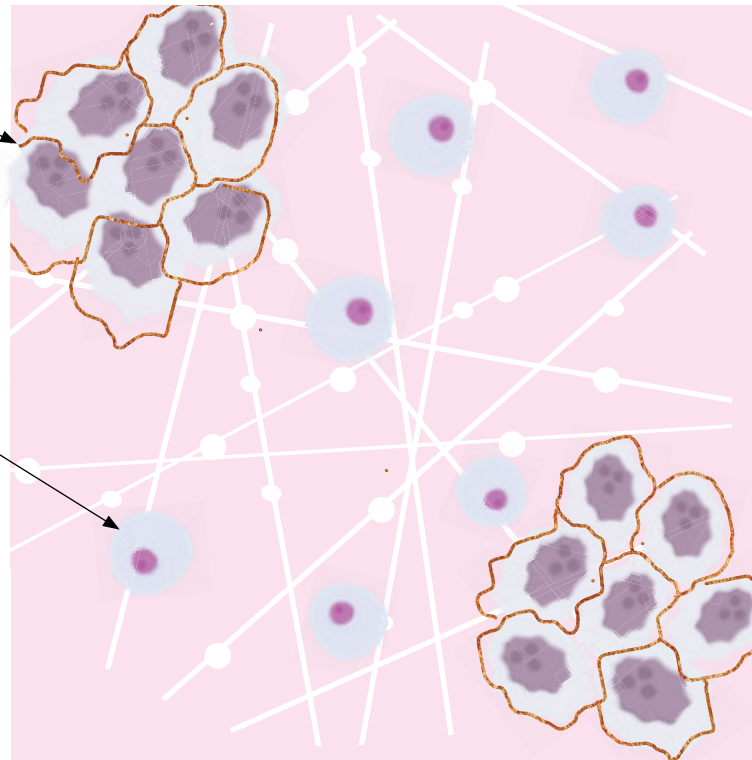
- >95% lack the protein E-Cadherin that enables clumping
- Cells grow in single file formation



VS.

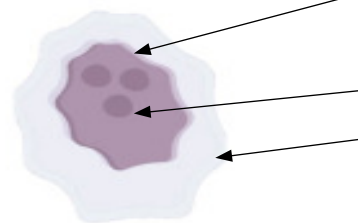
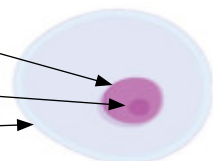
Invasive Ductal Carcinoma (IDC) Tumor Cells

- The protein E-Cadherin acts like “cellular glue”
- Tumors clump together in masses or “lumps”



Healthy VS. Cancer Cells

- Round or elliptic cell shape
- Single nucleus, spheroid shape
- Single nucleolus
- Greater cytoplasmic volume
- Controlled growth
- Does not spread to other sites



- Irregular cell shape and size
- Darker nucleus
- Multiple nucleoli
- Less cytoplasmic volume
- Uncontrolled growth
- Can spread to different locations in the body (metastasis)

Nucleus: the control center of the cell containing DNA and RNA

Nucleolus: composed of RNA and proteins, which form around specific chromosomal regions

Cytoplasm: gelatinous liquid that fills the inside of a cell